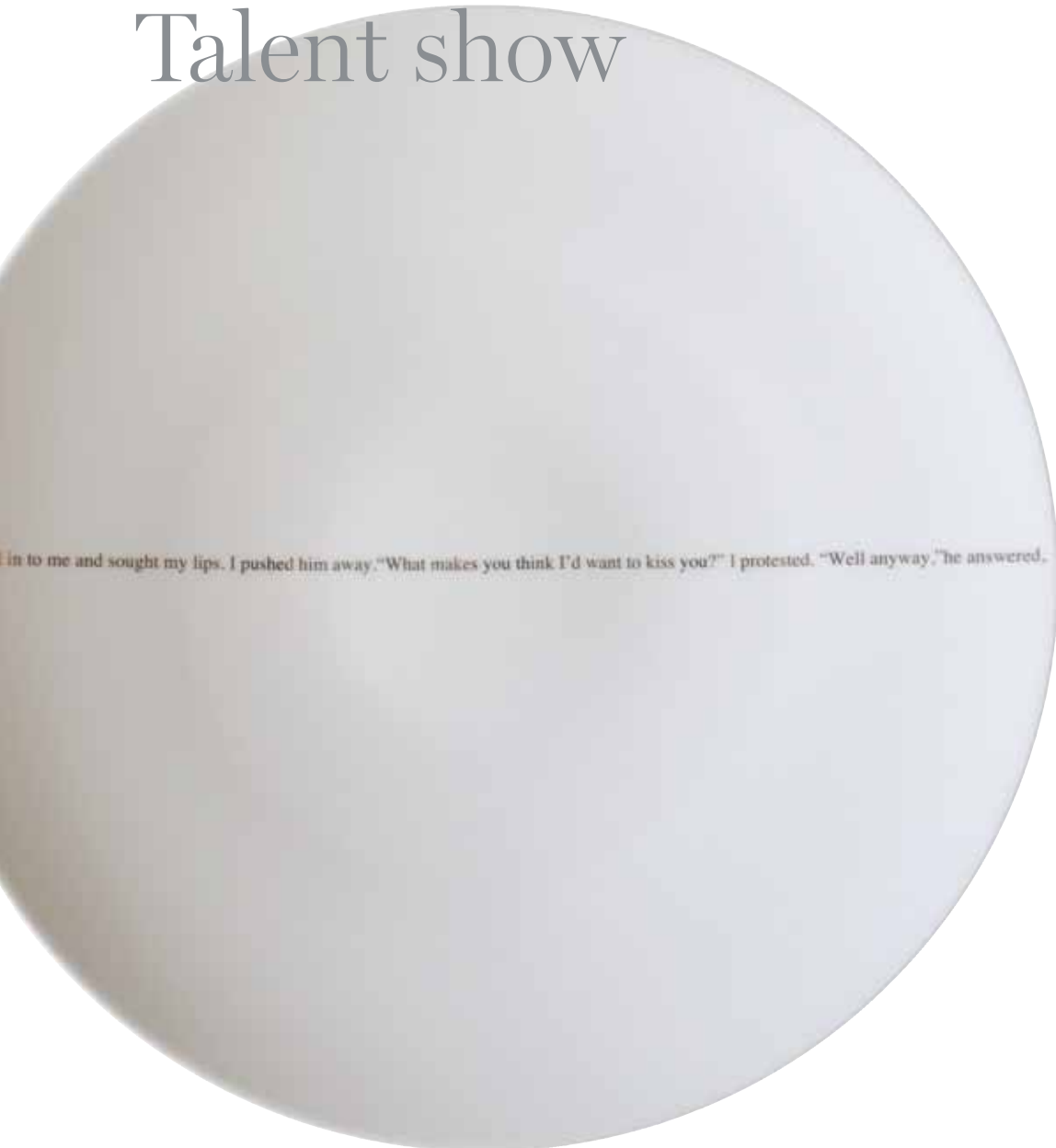


An alluring selection of design products from all over the globe – here are the brands and launches making headway, from established names to new faces

Talent show



< Table tales

To mark its 150th anniversary, French porcelain company Bernardaud has commissioned artists, filmmakers and photographers to make a series of plates, 'L'Art de la Table'. They include Jean-Michel Alberola, Jeff Koons, David Lynch and Sophie Calle, whose 'Pig' collection of six plates is decorated with a line of a story; diners must use them in the correct order to read it to the end – and never break one!

www.bernardaud150.com

> Chevron ceramics

'Type-32' by Diego Grandi for Lea Ceramiche is a new tile collection that uses two stages of printing to create an unexpected contrast and a bespoke finish. The first layer is wood grain, available in four colours; the second is a choice of two geometric patterns, which come in two shades. Each slim 20x200cm tile can then be laid in any combination (there's no pressure to match, though – the key is seeing beauty in the random mix). It's a more surreal take on a traditional herringbone floor.

www.ceramichelea.it



Created at the Castello

The historic Castello di Reschio estate in Umbria has launched a 20-piece furniture and lighting collection. Inspired by some of the pieces chief architect Count Benedikt Bolza has created over the decades as his family restored the many buildings on the estate, the range is made in Italy from locally sourced brass, steel, bronze and green oak. This 'Puritan Baroque' bed is typical of Reschio's style, making a grand statement without being over the top.

www.reschio.com





Triple slim

The 'Tri' pendant light by New Zealand design studio Resident is a beautiful, minimal take on a chandelier, its barely-there flex giving it even more of a weightless quality. Made in polished brass, it has three intersecting channels with recessed LED lights that provide a warming, diffused light - creating just the kind of moody, atmospheric illumination you need over a dining table.

.....
www.nest.co.uk



< ^ **Getting warmer**

The New Craftsmen sells homeware and fashion items from a network of designers working throughout the UK, celebrating skills and materials while championing British manufacturing. Two new additions to its collection highlight Scottish craftsmanship: smart Savile Row-esque cushions, designed by pattern-cutter Patrick Thomson and made from Isle of Mull Tweed; and luxurious rugs made from the skins of wild sheep on Auskerry, a remote Orkney Island, which are hand-cured, using rainwater to soften them.

.....
www.thenewcraftsmen.com



< **Subtle stripes**

The new fabric collection from Dominique Kieffer by Rubelli is made up of a modern palette of earthy tones and textures. Brackish greens complement rich browns and slubby greys, with pops of aquamarine and crimson for an element of surprise. Linen, velvet and chintz are all used for a patchwork of texture, while solid stripes provide the fun; pictured (top to bottom) are 'Tundra', 'Savana', 'Arctic' and 'Fiordo'.

.....
www.rubelli.com



< **The new Nordic**

The 'Oslo' chair, designed by young Norwegian studio Angell Wyller Aarseth for US furniture brand Bernhardt Design, combines Nordic and American sensibilities. Made in solid walnut, with a low-slung seat, its beauty lies in its simplicity. The studio decided to go back to the bare essentials for the frame, then wrap the fabric seat around it. 'Oslo' is available in a range of leather, suede and fabrics.

.....
www.bernhardtdesign.com

› **Perfectly Frank**

Referencing the 20th-century's high-style eras, Bert Frank's lighting has hints of art deco and mid-century modern, given a modern twist in scale and finish. The result is a collection that feels elegant yet androgynous. The brass or chrome 'Riddle' and 'Revolve' (pictured) ranges would comfortably suit a dark, moody office or a pretty, pared-back bedside table. Bert Frank makes its lights in the UK and also offers a custom colour and finish service.

www.bertfrank.co.uk



‹ **Sculpture for the table**

Fans of brass-detailed London restaurant Nopi will recognise the pedigree of its designer, Alex Meitlis, in a new vase collection for Israeli silversmith Hazorfim. Meitlis loves brass, but his sculptural 24-piece range also comes in silver and gold. The abstract vases, vessels, candle sconces and bowls are a contemporary departure for the heritage brand, which has previously focused on Jewish art.

www.hazorfim.co.il



Back to the stone age

The new 'Symmetry' wall and floor surface collection from Paris Ceramics includes this ornate 'Edie' inlaid stone floor, which is made from four types of marble that have been cut by water jet for precision. It makes a dramatic first impression in a hallway, particularly if, as pictured, its classic style were contrasted with contemporary dark walls. The range also includes inlays in natural shell and glass.

www.parisceramics.com

> **Modern Manners**

Jennifer Manners' bespoke rugs are not simply unique – a handmade, custom piece is created in your choice of colour, size and pattern – but they tell a good story, too. 'Maze' (far left) is inspired by the view you would see if you flew over the hedge labyrinth at Hatfield House in Hertfordshire, while 'Crossed Path' (left) looks like the stone garden pathways you might come across in the south of France.

.....
www.jennifermanners.co.uk



< **Folk art**

Finnish tableware and glass brand Iittala has extended its popular 'Taika' collection to include a dip bowl, a porcelain spoon, a serving bowl, two deep plates, an etched tumbler and a wool cushion cover and throw. Klaus Haapaniemi's whimsical folk-story-inspired animal illustrations still decorate the range (its name means "magic" in English), which launched in 2007. The ceramics themselves for these latest additions were created by one of Finland's most influential designers, Heikki Orvola.

.....
www.iittala.com

Museum piece

Ron Gilad's '45°/Vetrina' cabinet from his Grado° collection for Molteni&C explores the Israeli designer's interest in basic geometric shapes. Its minimal profile is achieved by the clever use of aluminium cores, veneered with American walnut, creating a strong structure that, visually speaking, treads lightly. Inspired by a museum display case, the cabinet creates a 360-degree showcase for treasured objects, and is available with or without a door.

.....
www.molteni.it





With bells on

Swedish-born interior designer Staffan Tollgård has opened a new 325 sq m showroom in Chelsea's Grosvenor Waterside, joining big-name neighbours David Linley, Luke Irwin and Nicholas Haslam. It stocks brands including Autoban, Flexform, Driade and Flos. Tollgård has also launched 'Belle', his first light with Italian company Contardi: its matt-black exterior conceals a polished-bronze lining, referenced by the light's metallic-bronze rope. 'Belle' is also available in matte white with a polished silver lining.

.....
www.tollgard.co.uk



Glittering prizes

Inspired by motifs taken from vintage pieces and flea-market finds, Harlequin's 'Leonida' collection is a decadent take on faded grandeur. A rich colour palette of bronze, charcoal, pewter, gold, powder blue and pearl combine in eight wallpapers and four velvets. The patterns vary in scale and provenance, including trompe l'oeil distressed plaster in a foil finish, delicate Moorish fretwork and oversized damasks (pictured is the scalloped 'Demi').

.....
www.harlequin.uk.com

> Trip to the tropics

It might be winter in the UK, but the 'Paradise' fabric collection from JAB Anstoetz's Chivasso brand will add a hint of year-round exotica to any home. The 'Fancy Flower' fabric (pictured) is a pretty floral in giant scale, and the ideal textile to transform a simple chair into a statement piece. Other fabrics in the range feature rainforest palm fronds, tropical blooms and colourful parrots.

.....
www.jab-uk.co.uk



> In a spin

Czech designer Lucie Koldová's glass 'Spin' light by for Lasvit was inspired by a child's spinning top. Its graduating colour and simple shape make it ideal for grouping – suspend several together at varying heights to create a dramatic cluster light. The LED lights are available in three different sizes.

.....
www.lasvit.com



✓ Defined by deco

Bold and chic, the Thirties continue to be a rich source of inspiration for modern furniture. The 'Hughes' sofa from Portuguese furniture company Munna recreates the decade's glamour with starlet-friendly touches including rich velvet upholstery, mirrored feet and curvaceous lines. Use Munna's own range of fabrics, or supply your own, and select from a mix of materials for the two footers that run around the base, including brass, copper and stainless steel as well as a range of wood stains and coloured lacquers.

.....
www.munnadesign.com



< A shade better

Bespoke furniture and lighting designer Victoria Stainow is exploring vellum as a material in her latest collection. Traditionally used to make the pages of precious books, the calfskin parchment adds subtle luxury to tables, mirrors and this 'Petite Lampe Parchemin'. The lamp is available in a variety of colours and can be embellished along its sides with an inlay of brass or chrome.

.....
www.victoriastainow.com

